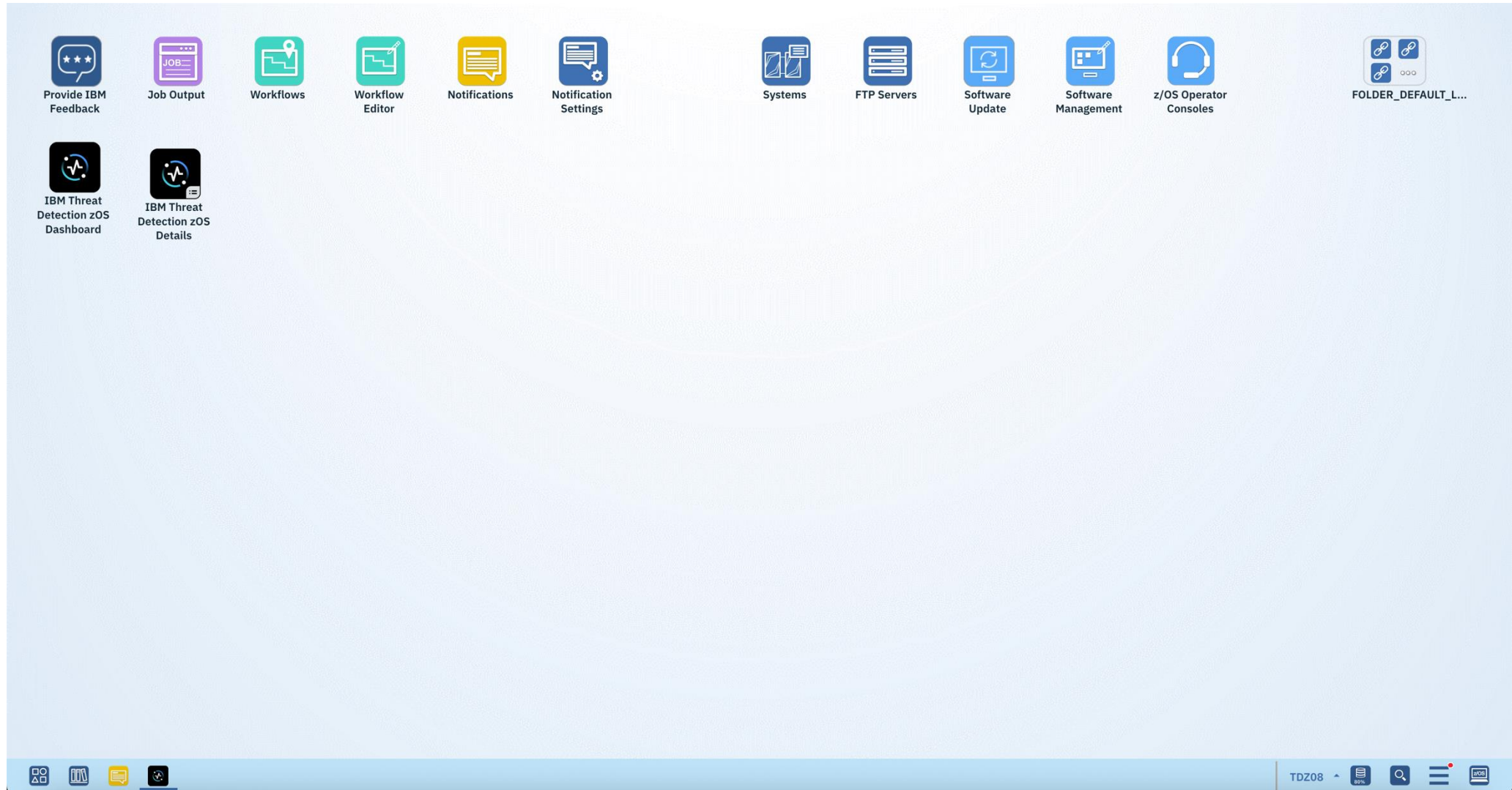


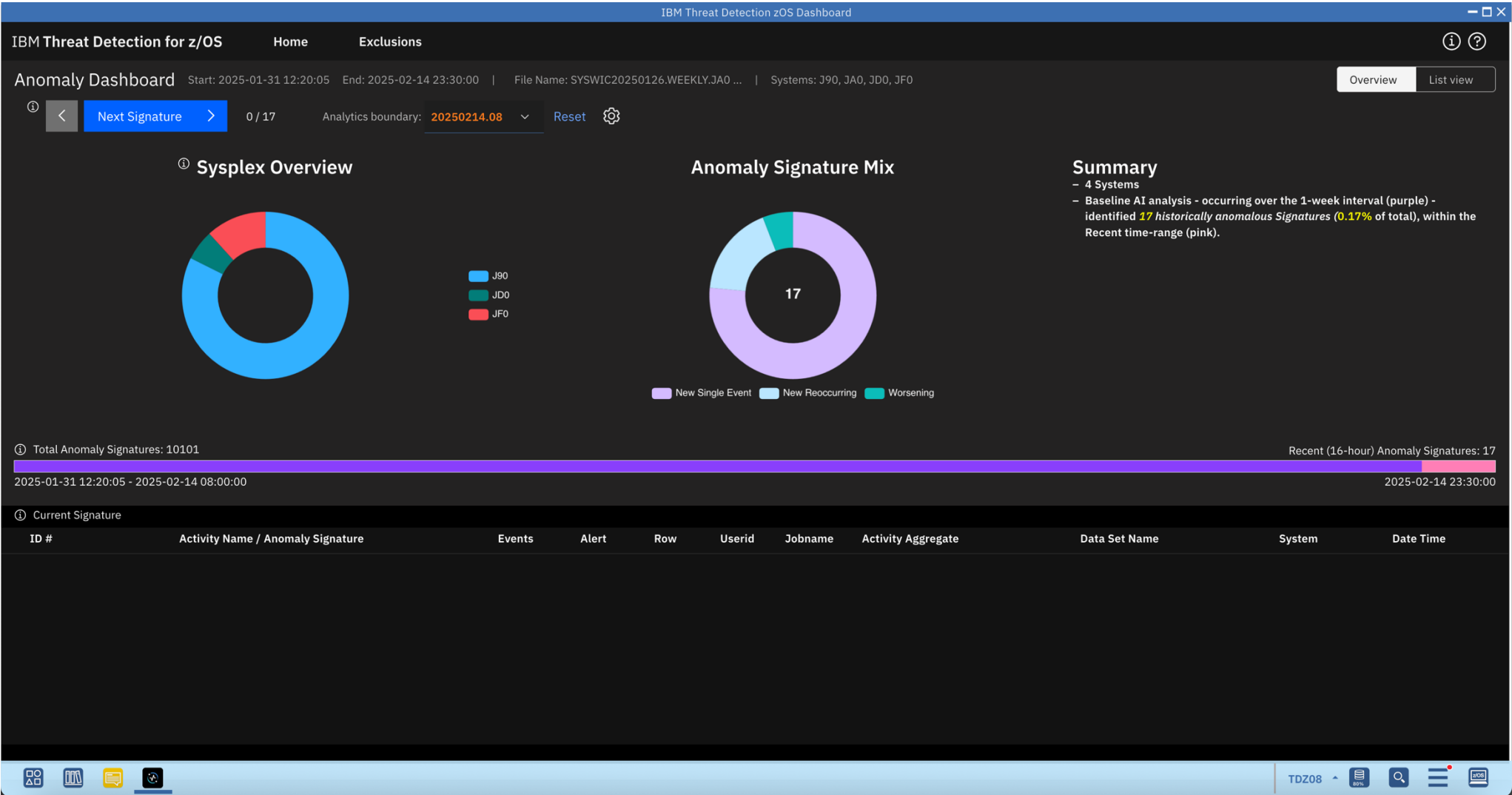
z/OSMF plug-in for IBM TDz

- 2 Icons / Apps for TDz
 - Dashboard
 - Details



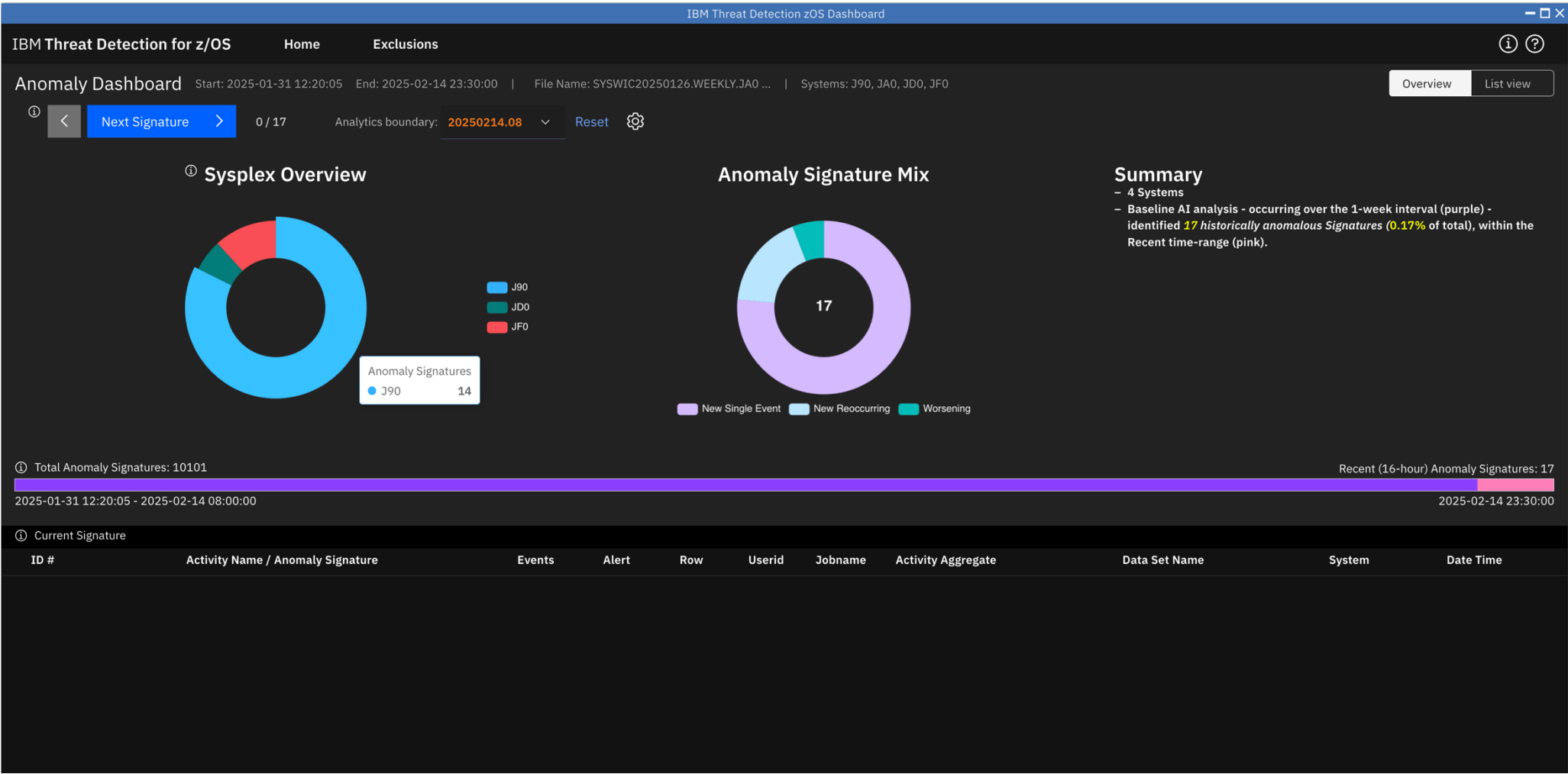
TDz Dashboard – Overview

- Opens in a new window
- Shows anomaly signatures
 - LPAR view
 - Signature type view
- Summary information
- Boundary Date and Interval Display
- Includes Start and End time including Baseline
- No display of signature as counter is 0/17



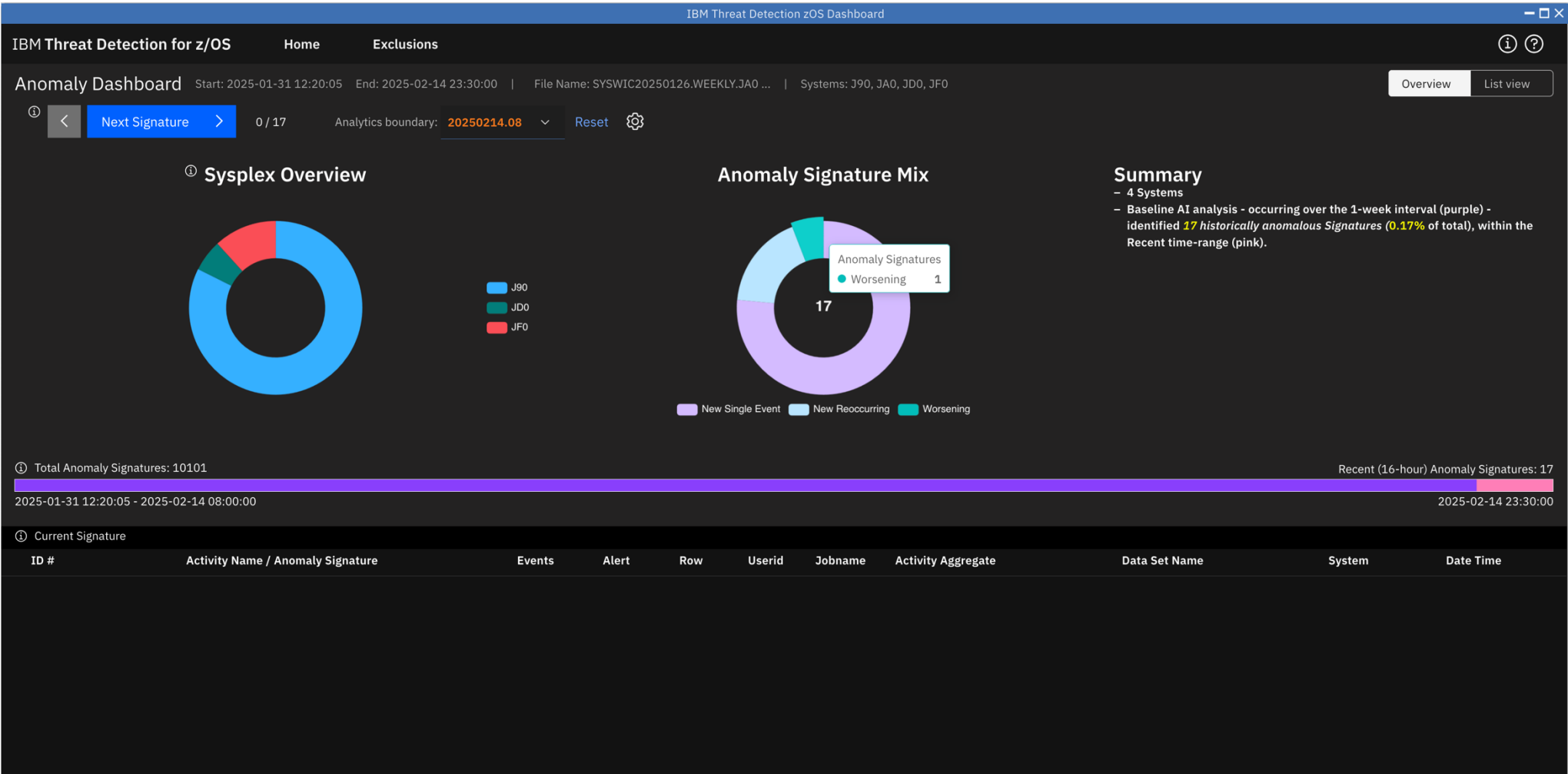
TDz Dashboard – Overview

- Hovering over Sysplex Overview highlights anomaly signatures per LPAR



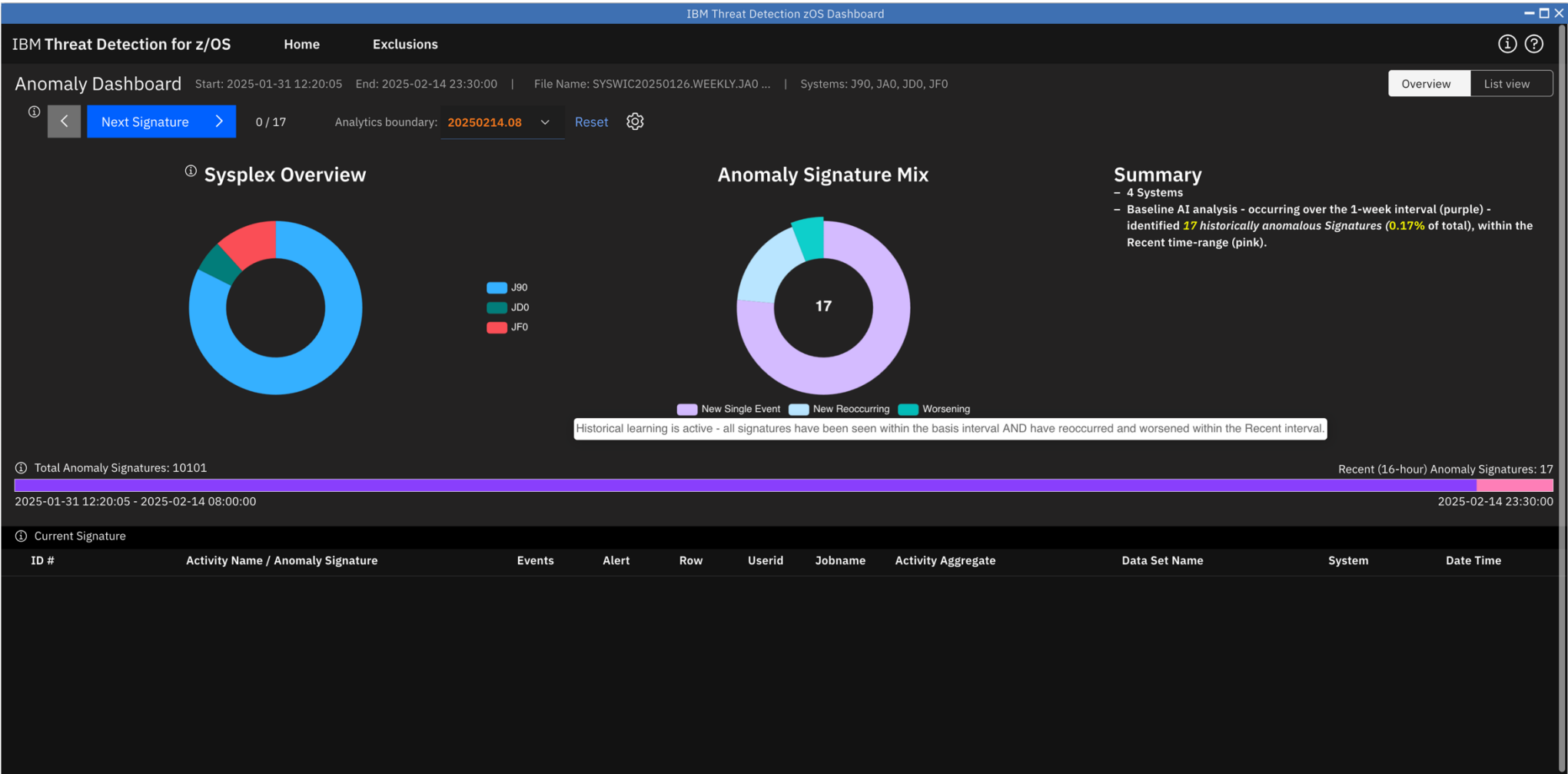
TDz Dashboard – Overview

- Hovering over Anomaly Signature Mix highlights type of anomaly



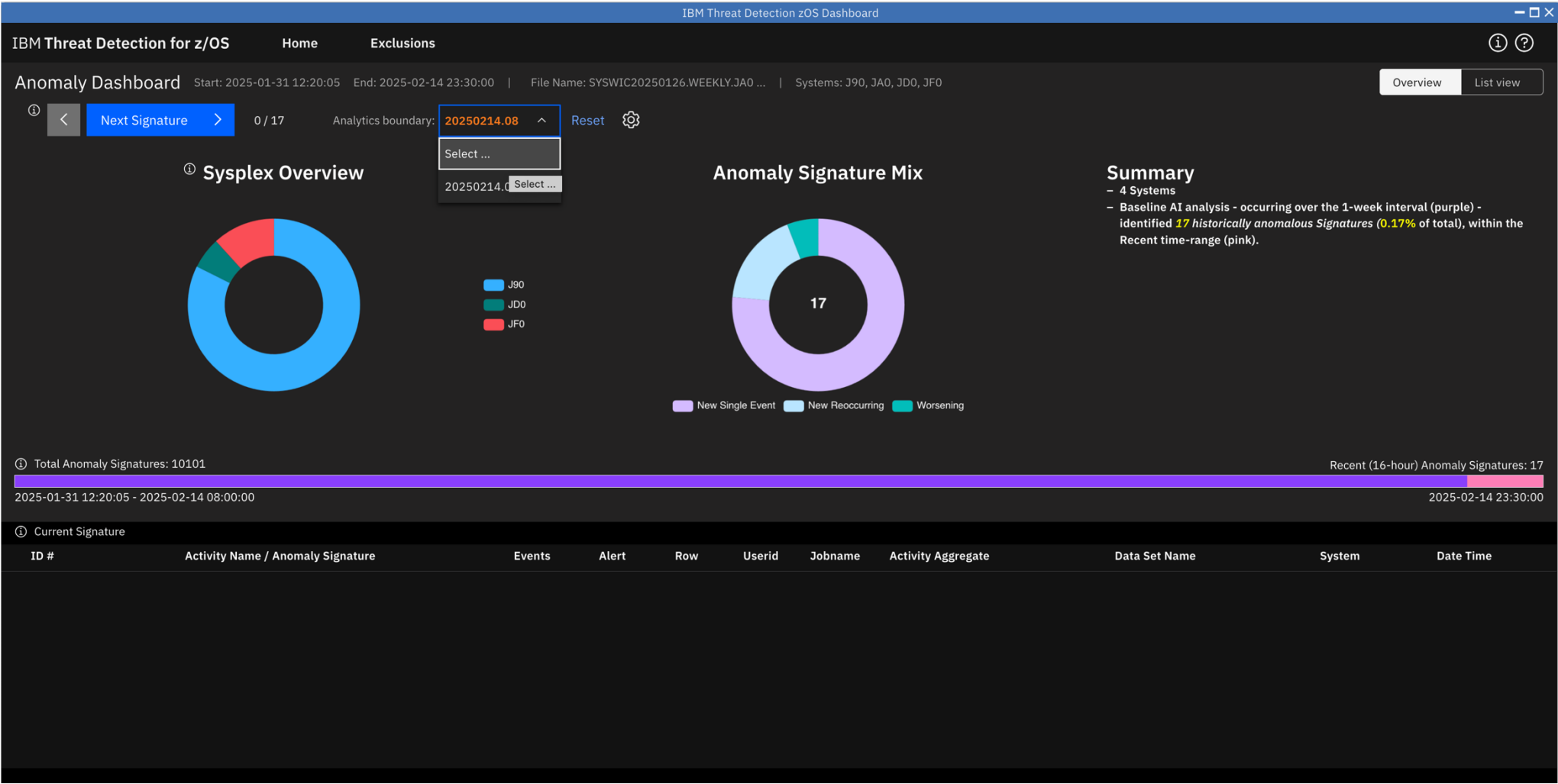
TDz Dashboard – Overview

- Description of signature types
- New Single Event = have not been seen within the basis interval AND have occurred once in the recent interval
- New Reoccurring Event = have not been seen within the basis interval AND have reoccurred in the recent interval
- Worsening = see screen shot



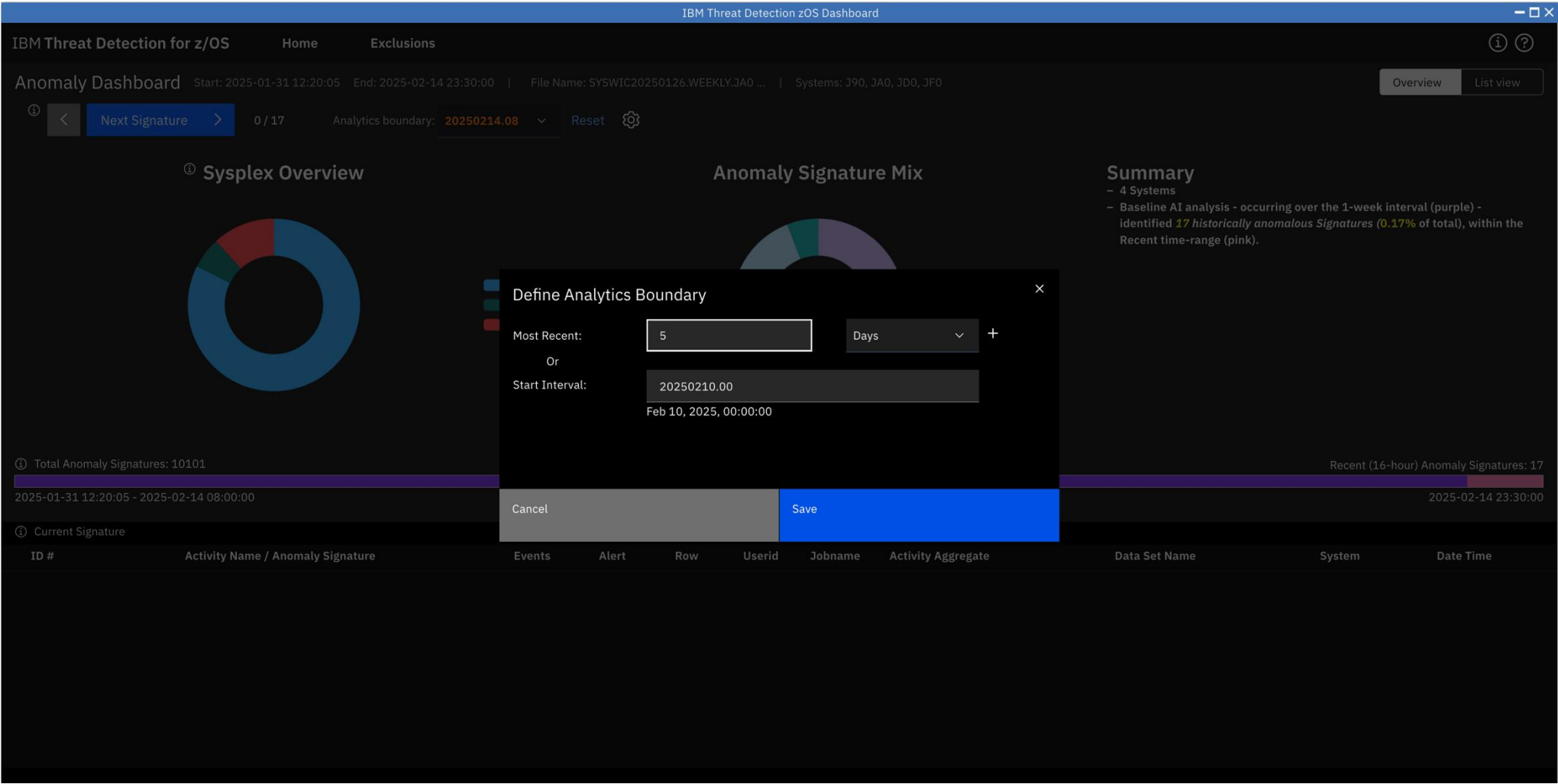
TDz Dashboard – Overview

- Set Analytics Boundary



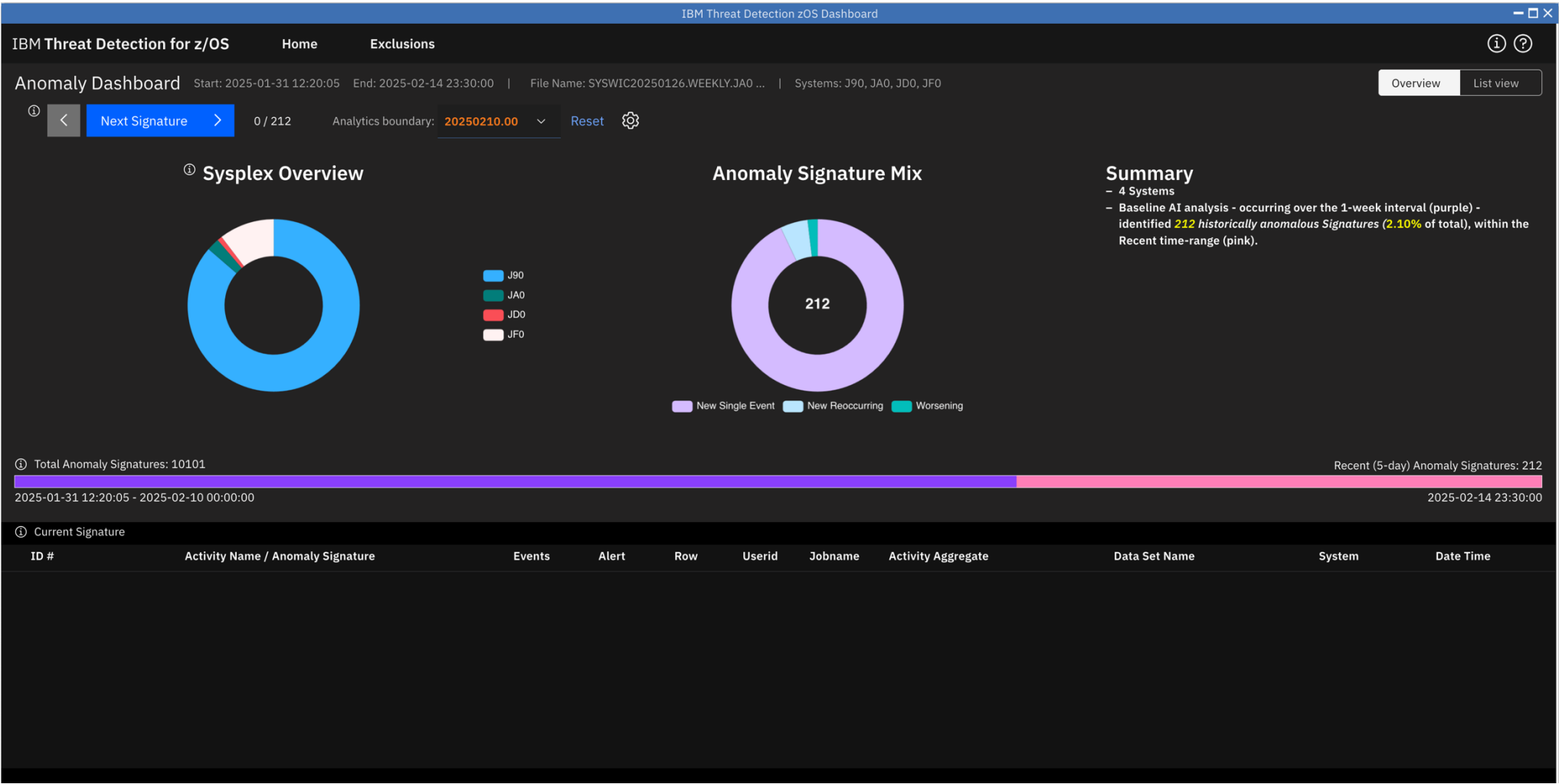
TDz Dashboard – Overview

- Set Analytics Boundary
- Define most recent Interval



TDz Dashboard – Overview

- Set Analytics Boundary
- Most Recent Interval enlarged
- Number of Signatures increased
- Additional LPAR JF0 shows up



TDz Dashboard – List View

- Same signature presented on list view

IBM Threat Detection for z/OS

Home

Exclusions

Anomaly Dashboard

Start: 2025-01-31 12:20:05 End: 2025-02-14 23:30:00 | File Name: SYSWIC20250126.WEEKLY.JA0 ... | Systems: J90, JA0, JD0, JF0

Overview

List view

ⓘ

<

New Recurring

>

<

Next

>

5 / 17

Analytics boundary:

20250214.08

▼

Enable / Remove:

Column filter or sort actions ...

▼

Reset

ID #	Activity Name / Anomaly Signature	Events	Alert	Row	Userid	Jobname	Activity Aggregate	Data Set Name	System	Date Time
===== Worsening =====										
WR1	Bytes Written ... [ENHANCED_WRITE]	4			OPCADM	BSONST5B				
						BSONST4B				
						BSONST4B				
===== New Recurring =====										
NR1	Bytes Written ... [BASIC_WRITE]	2	Alert		DGISOLFI	RUNINTRD				
						RUNINTRD				
NR2	Bytes Read ... [BASIC_READ]	2	Alert		MCOHOON	MCOHOON				
						MCOHOON				
NR3	Bytes Read ... [ENHANCED_READ] /DBWGSYS	2		* R1	DBWGSYS	DBW8DBM1	787.7 MB	DB2DBWG.DSNDBD.CFCDB37.STAHIS37.I0001.A001	JF0	20250214.103500
				R2		DBW8DBM1	779.6 MB	DB2DBWG.DSNDBD.CFCDB37.STAHIS37.I0001.A001	JF0	20250214.083000
DB2DBWG.DSNDBD.CFCDB37.STAHIS37[...]										
===== New Single Event =====										
SR1	Bytes Read ... [BASIC_READ]	1	Alert		DGISOLFI	RUNINTRD				
SR2	Bytes Written ... [ENHANCED_WRITE]	1			IXGLOGR	IXGLOGR				
SR3	Bytes Written ... [ENHANCED_WRITE]	1			IXGLOGR	IXGLOGR				
SR4	Bytes Written ... [ENHANCED_WRITE]	1			IXGLOGR	IXGLOGR				
SR5	Bytes Written ... [ENHANCED_WRITE]	1			FANTOM	LODFPITB				
SR6	Bytes Written ... [ENHANCED_WRITE]	1			IXGLOGR	IXGLOGR				

TDz Dashboard – List View

- Select Date Time field
- Indication of the upcoming processing of a specific file

IBM Threat Detection for z/OS

HomeExclusions

Anomaly Dashboard

Start: 2025-01-31 12:20:05End: 2025-02-14 23:30:00File Name: SYSWIC20250126.WEEKLY.JA0 ...Systems: J90, JA0, JD0, JF0

OverviewList view

ⓘ

<New Reoccurring>>

<Next>

5 / 17

Analytics boundary: 20250214.08

Enable / Remove: Column filter or sort actions ...

Reset

ID #	Activity Name / Anomaly Signature	Events	Alert	Row	Userid	Jobname	Activity Aggregate	Data Set Name	System	Date Time
===== Worsening =====										
WR1	Bytes Written ... [ENHANCED_WRITE]	4			OPCADM	BSONST5B				
						BSONST4B				
						BSONST4B				
===== New Reoccurring =====										
NR1	Bytes Written ... [BASIC_WRITE]									
NR2	Bytes Read ... [BASIC_READ]									
NR3	Bytes Read ... [ENHANCED_READ] /DBWGSYS									
	DB2DBWG.DSNDBD.CFCDB37.STAHIS37[...]			R2		DBW8DBM1	779.6 MB	DB2DBWG.DSNDBD.CFCDB37.STAHIS37.10001.A001	JF0	20250214.103500
								DB2DBWG.DSNDBD.CFCDB37.STAHIS37.10001.A001	JF0	20250214.083000
===== New Single Event =====										
SR1	Bytes Read ... [BASIC_READ]	1	Alert		DGISOLFI	RUNINTRD				
SR2	Bytes Written ... [ENHANCED_WRITE]	1			IXGLOGR	IXGLOGR				
SR3	Bytes Written ... [ENHANCED_WRITE]	1			IXGLOGR	IXGLOGR				
SR4	Bytes Written ... [ENHANCED_WRITE]	1			IXGLOGR	IXGLOGR				
SR5	Bytes Written ... [ENHANCED_WRITE]	1			FANTOM	LODFPITB				
SR6	Bytes Written ... [ENHANCED_WRITE]	1			IXGLOGR	IXGLOGR				

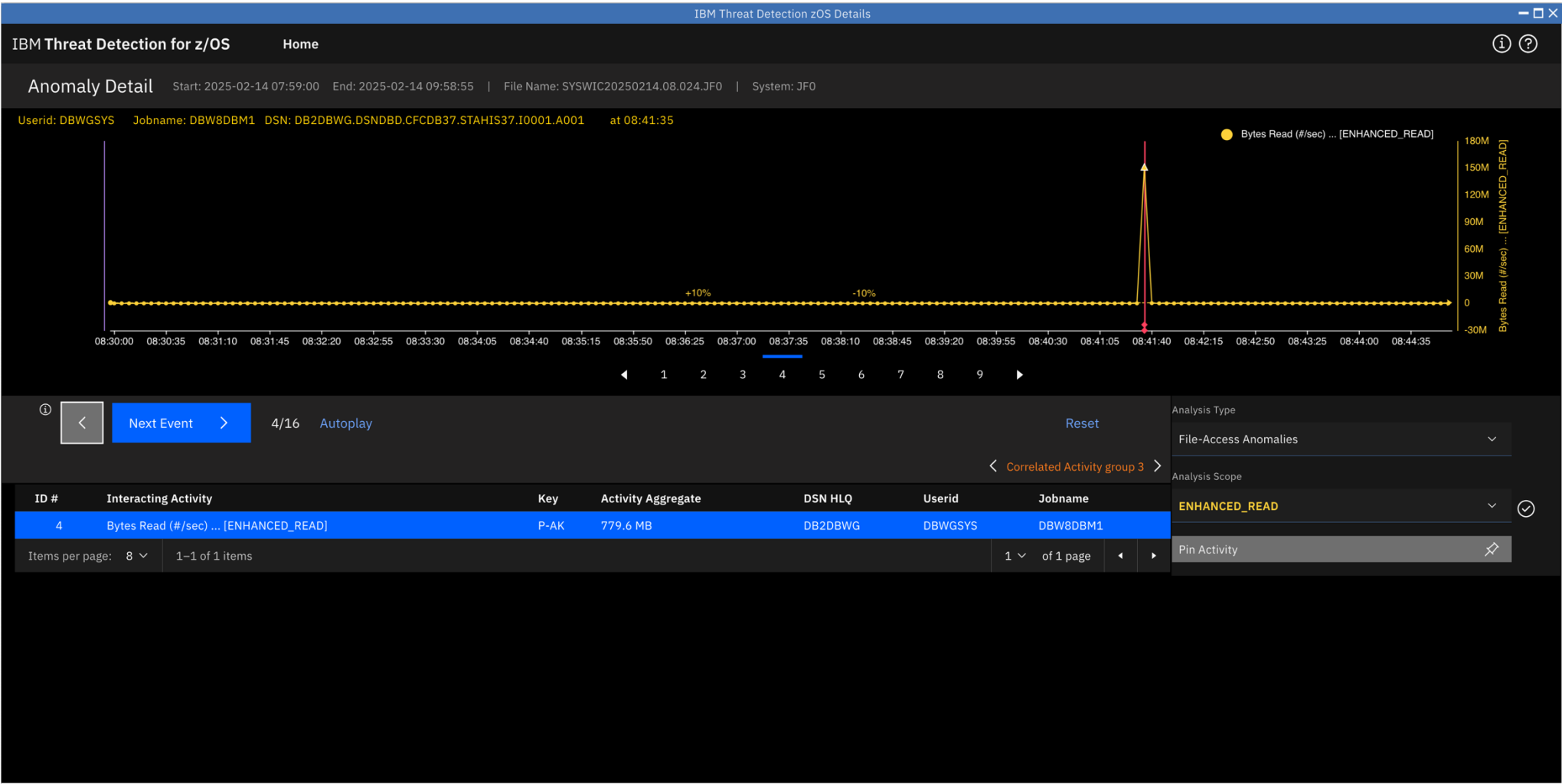
IBM Threat Detection for z/OS

Launch Anomaly Detail to Analyze SYSWIC20250214.08.024.JF0 in new browser window.

CancelOK

TDz Detail View

- Event ID = 4
- Belongs to Correlated Activity Group 3
- Red mark points to anomaly
- But no alert connected with this anomaly



TDz Dashboard – List View

- Back to List View
- Filter on Alerts
- Alert Radio Button appears

IBM Threat Detection for z/OS

HomeExclusions

Anomaly Dashboard

Start: 2025-01-31 12:20:05End: 2025-02-14 23:30:00File Name: SYSWIC20250126.WEEKLY.JA0 ...Systems: J90, JA0, JD0, JF0

OverviewList view

Alert: ☐

Column filter or sort actions ...
Column filter or sort actions ...
* Activity Name
Activity Aggregate
Alert
Date Time
Jobname
Systems
Userid

ID #	Activity Name / Anomaly Signature	Events	Alert	Row	Userid	Jobname	Activity Aggregate	Data Set Name
===== Worsening =====								
WR1	Bytes Written ... [ENHANCED_WRITE]	4			OPCADM	BSNST5B		
						BSNST4B		
						BSNST4B		
===== New Reoccurring =====								
NR1	Bytes Written ... [BASIC_WRITE]	2			DGISOIFI	RUNINTRD		
			Alert			RUNINTRD		
NR2	Bytes Read ... [BASIC_READ]	2			MCOHOON	MCOHOON		
			Alert			MCOHOON		
NR3	Bytes Read ... [ENHANCED_READ]	2		* R1	DBWGSYS	DBW8DBM1	787.7 MB	DB2DBWG.DSNDBD.CFCDB37.STAHIS37.I0001.A001
	/DBWGSYS			R2		DBW8DBM1	779.6 MB	DB2DBWG.DSNDBD.CFCDB37.STAHIS37.I0001.A001
DB2DBWG.DSNDBD.CFCDB37.STAHIS37[...]								
===== New Single Event =====								
SR1	Bytes Read ... [BASIC_READ]	1	Alert		DGISOIFI	RUNINTRD		
SR2	Bytes Written ... [ENHANCED_WRITE]	1			IXGLOGR	IXGLOGR		
SR3	Bytes Written ... [ENHANCED_WRITE]	1			IXGLOGR	IXGLOGR		
SR4	Bytes Written ... [ENHANCED_WRITE]	1			IXGLOGR	IXGLOGR		
SR5	Bytes Written ... [ENHANCED_WRITE]	1			FANTOM	LODFPITB		
SR6	Bytes Written ... [ENHANCED_WRITE]	1			IXGLOGR	IXGLOGR		

TDz Dashboard – List View

- Select Alert Radio Button
- Only Signatures which generated an alert

IBM Threat Detection for z/OS

HomeExclusions

IBM Threat Detection z/OS Dashboard

Anomaly Dashboard

Start: 2025-01-31 12:20:05End: 2025-02-14 23:30:00 | File Name: SYSWIC20250126.WEEKLY.JA0 ... | Systems: J90, JA0, JD0, JF0

OverviewList view

ⓘ

<New Reoccurring>>

<Next>

2 / 3

Analytics boundary: 20250214.08

Enable / Remove: Column filter or sort actions ...

Reset

Alert: ☒

Only the signatures with alert are included in the Inspector progression, when checked.

ID #	Signature	Events	Alert	Row	Userid	Jobname	Activity Aggregate	Data Set Name	System	Date Time
===== Worsening =====										
===== New Reoccurring =====										
NR1	Bytes Written ... [BASIC_WRITE]	2		* R1	DGISOLFI	RUNINTRD	11.3 GB	BPTEST.APP.SOR4.DATA	J90	20250214.121500
	/DGISOLFI		Alert	R2		RUNINTRD	5.9 GB	BPTEST.APP.SOR3.DATA	J90	20250214.121000
	BPTEST[...]									
NR2	Bytes Read ... [BASIC_READ]	2			MCOHOON	MCOHOON				
			Alert			MCOHOON				
===== New Single Event =====										
SR1	Bytes Read ... [BASIC_READ]	1	Alert		DGISOLFI	RUNINTRD				

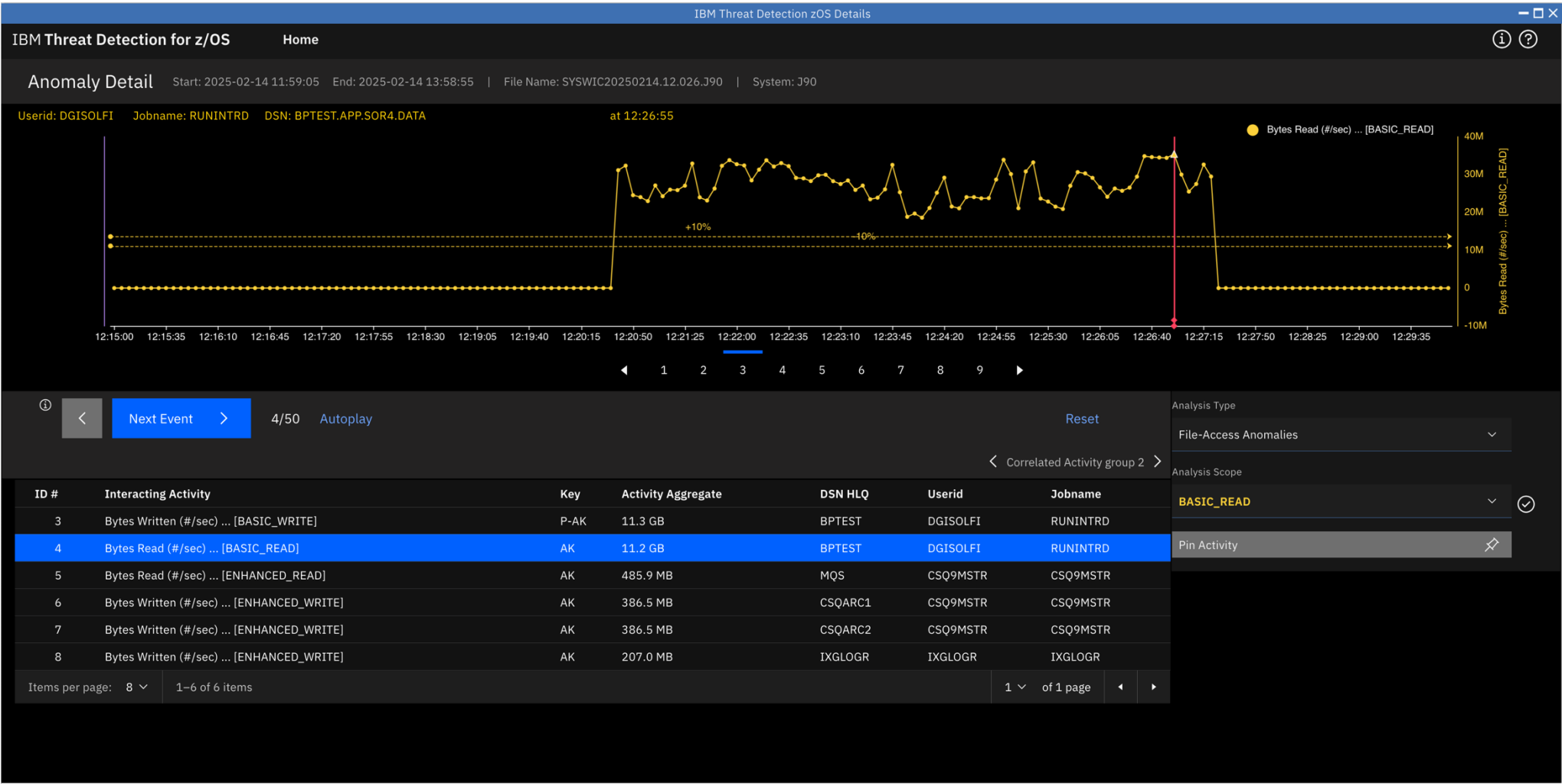
TDz Detail View

- 50 individual events have resulted in an alert
- All events belong to Correlated Activity Group 2
- Look at the 6 events in this list



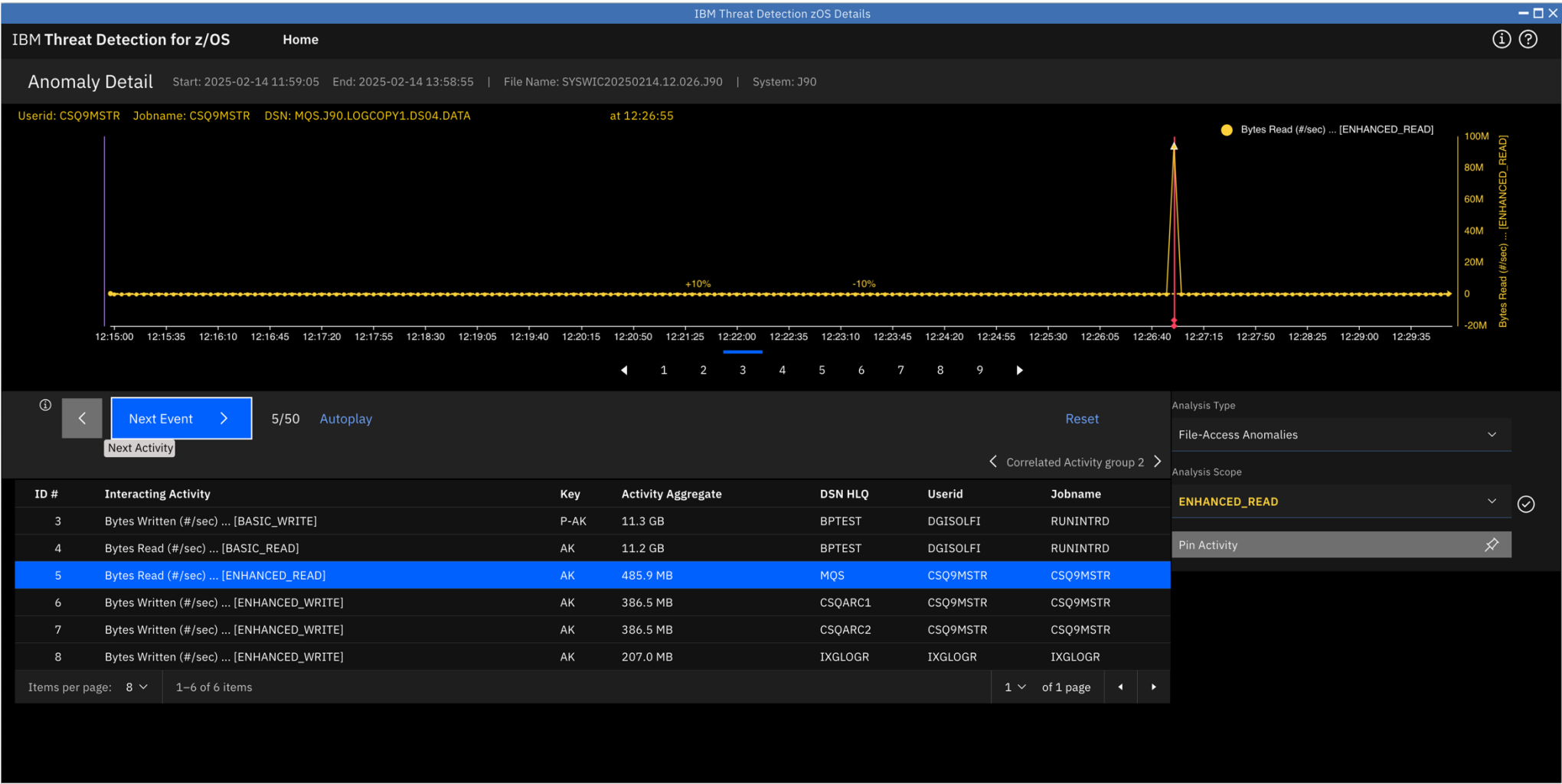
TDz Detail View

- View next Event



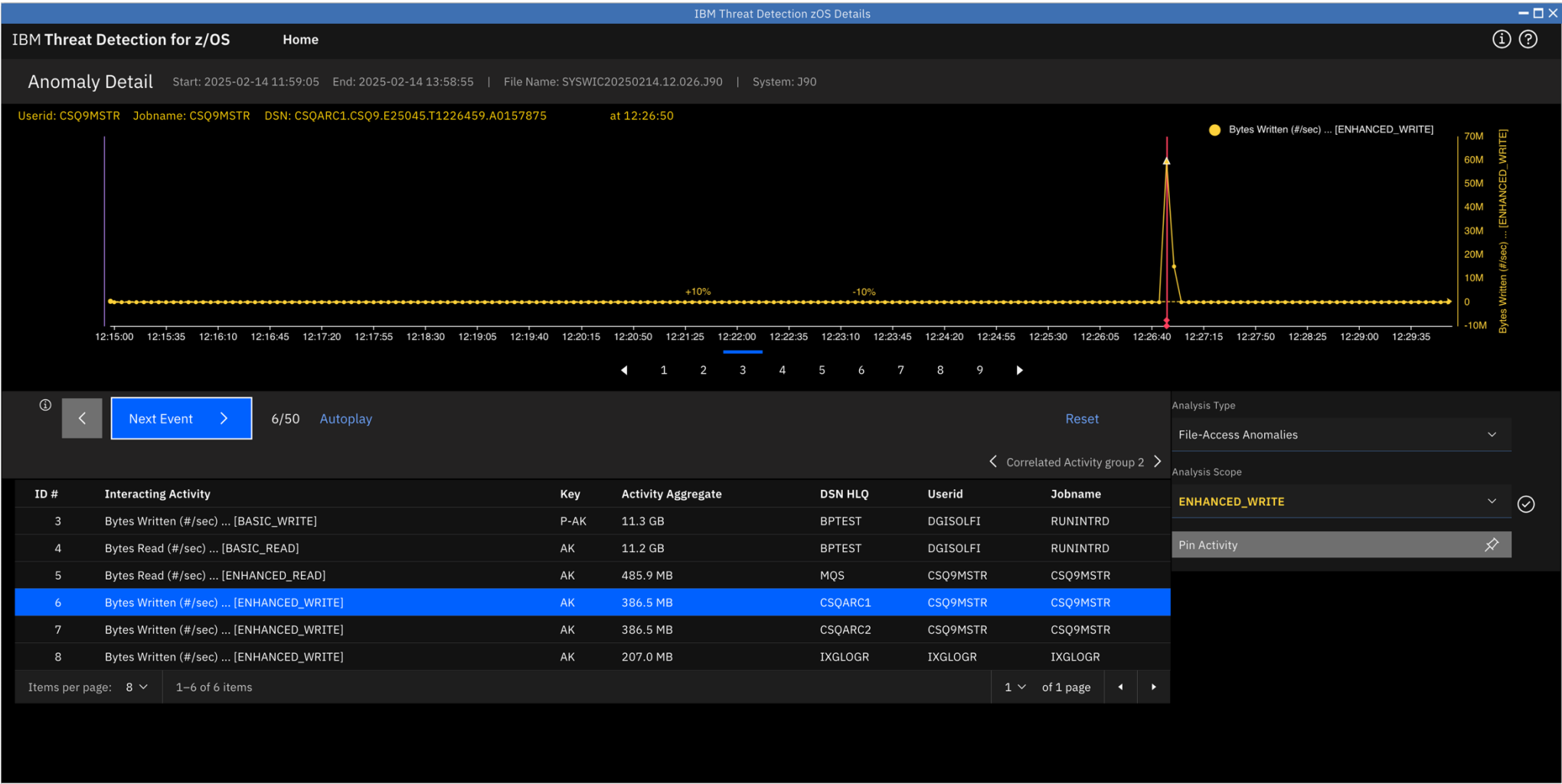
TDz Detail View

- View next Event
- Different pattern but red marker at the same time



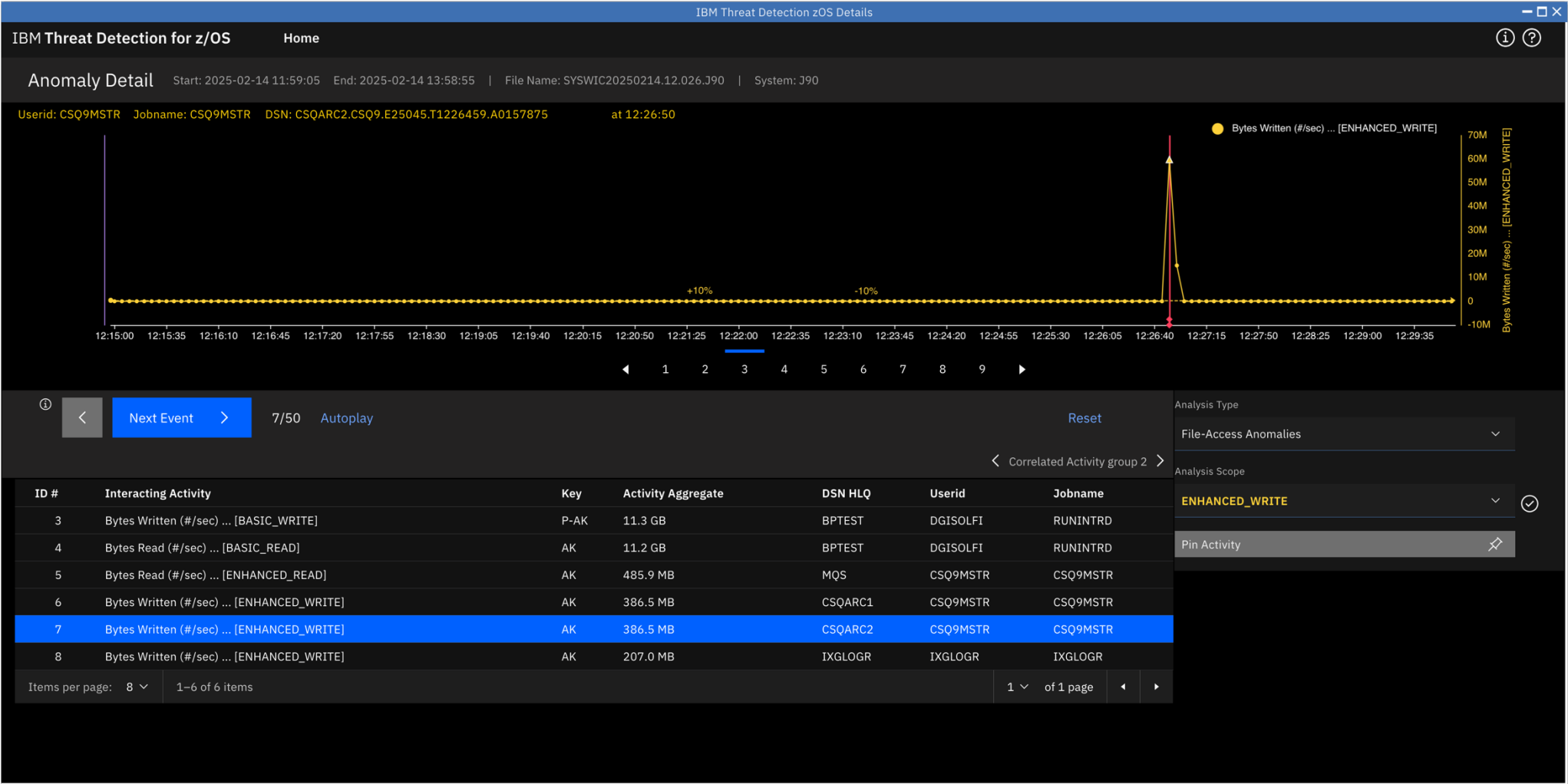
TDz Detail View

- View next Event



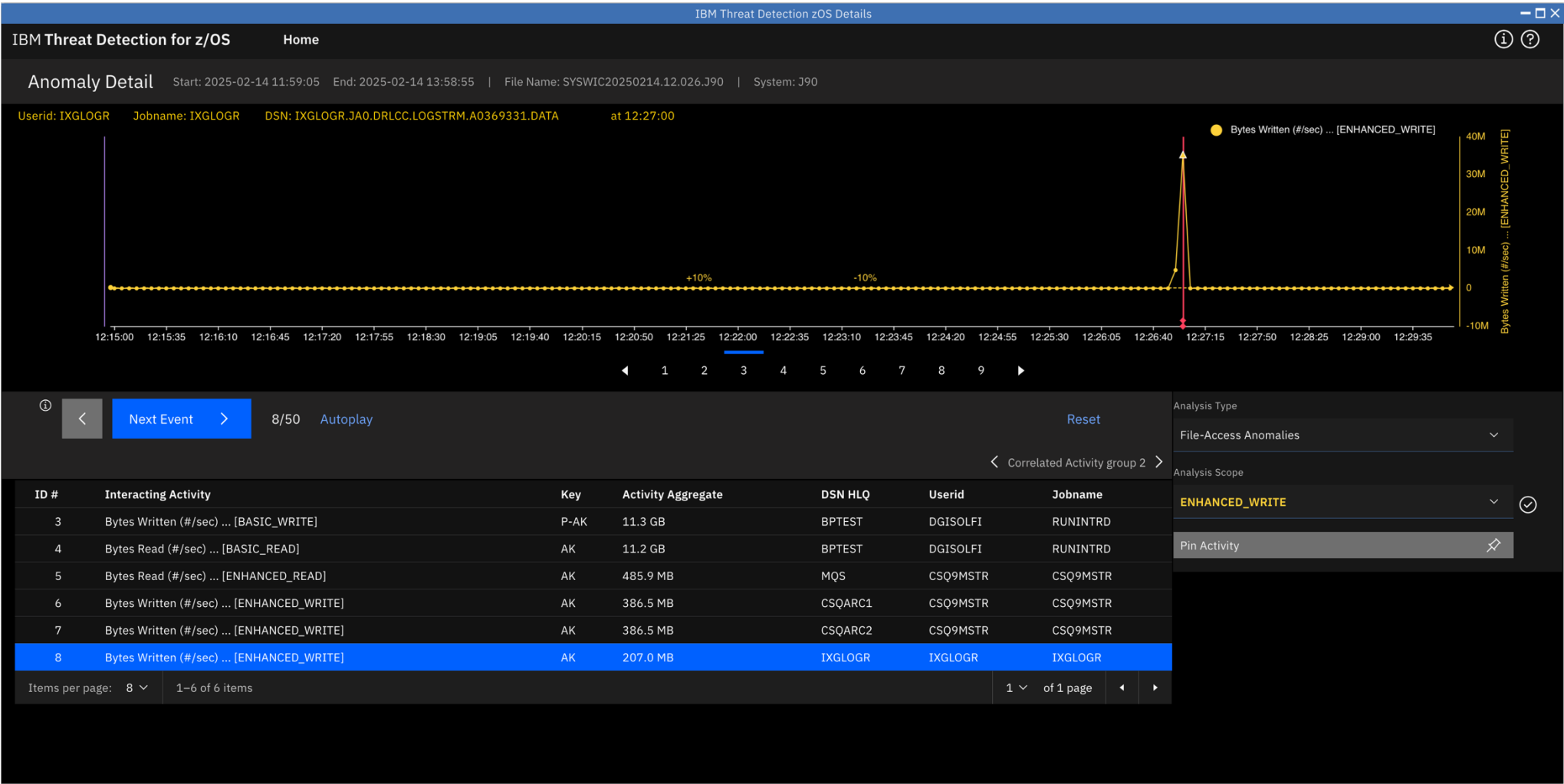
TDz Detail View

- View next Event



TDz Detail View

- View last Event
- Different
 - Patterns
 - Files
 - UserIds
 - Jobnames
- At almost the same time
- But may be a false positive?
- However event #3 and #4 are highly suspicious
- Let's look at another alert



TDz Dashboard – List View

- Back to List View
- Another alert for the same user and the same job name
- But accessed another dataset
- Go to details

IBM Threat Detection for z/OS

HomeExclusions

Anomaly Dashboard

Start: 2025-01-31 12:20:05End: 2025-02-14 23:30:00 | File Name: SYSWIC20250126.WEEKLY.JA0 ... | Systems: J90, JA0, JD0, JF0

OverviewList view

ⓘ

<New Single Event>>

<Next>

1 / 3

Analytics boundary: 20250214.08

Enable / Remove: Column filter or sort actions ...

Reset

Alert:

ID #	Activity Name / Anomaly Signature	Events	Alert	Row	Userid	Jobname	Activity Aggregate	Data Set Name	System	Date Time
===== Worsening =====										
===== New Reoccurring =====										
NR1	Bytes Written ... [BASIC_WRITE]	2			DGISOLFI	RUNINTRD				
			Alert							
NR2	Bytes Read ... [BASIC_READ]	2			MCOHOON	MCOHOON				
			Alert							
===== New Single Event =====										
SR1	Bytes Read ... [BASIC_READ] /DGISOLFI BPTEST[...]	1	Alert	*	DGISOLFI	RUNINTRD	19.0 GB	BPTEST.APP.SOR.DATA	J90	20250214.120000

TDz Dashboard – List View

- Further filtering on UserId to see all signatures for this specific UserId could be useful

IBM Threat Detection for z/OS

HomeExclusions

Anomaly Dashboard

Start: 2025-01-31 12:20:05End: 2025-02-14 23:30:00 | File Name: SYSWIC20250126.WEEKLY.JA0 ... | Systems: J90, JA0, JD0, JF0

OverviewList view

Alert: Userid: **DGIS**

<New Reoccurring>>

<Next>

2 / 2

Analytics boundary: 20250214.08

Enable / Remove:

Column filter or sort actions ...

Reset

ID #	Activity Name / Anomaly Signature	Events	Alert	Row	UserId	Jobname	Activity Aggregate	Data Set Name
===== Worsening =====								
===== New Reoccurring =====								
NR1	Bytes Written ... [BASIC_WRITE]	2		* R1	DGISOLFI	RUNINTRD	11.3 GB	BPTEST.APP.SOR4.DATA
	/DGISOLFI		Alert	R2		RUNINTRD	5.9 GB	BPTEST.APP.SOR3.DATA
	BPTEST[...]							
===== New Single Event =====								
SR1	Bytes Read ... [BASIC_READ]	1	Alert		DGISOLFI	RUNINTRD		

* Activity Name

Activity Aggregate

Alert

Date Time

Jobname

Systems

UserId

UserId

- Now select SR1

IBM Threat Detection for z/OS
Home
Exclusions

(i) (?)

Anomaly Dashboard
Start: 2025-01-31 12:20:05 End: 2025-02-14 23:30:00 | File Name: SYSWIC20250126.WEEKLY.JA0 ... | Systems: J90, JA0, JD0, JF0

Overview
List view

(i)

<
New Single Event
>
<
Next >
1 / 2

Analytics boundary: 20250214.08
Enable / Remove:

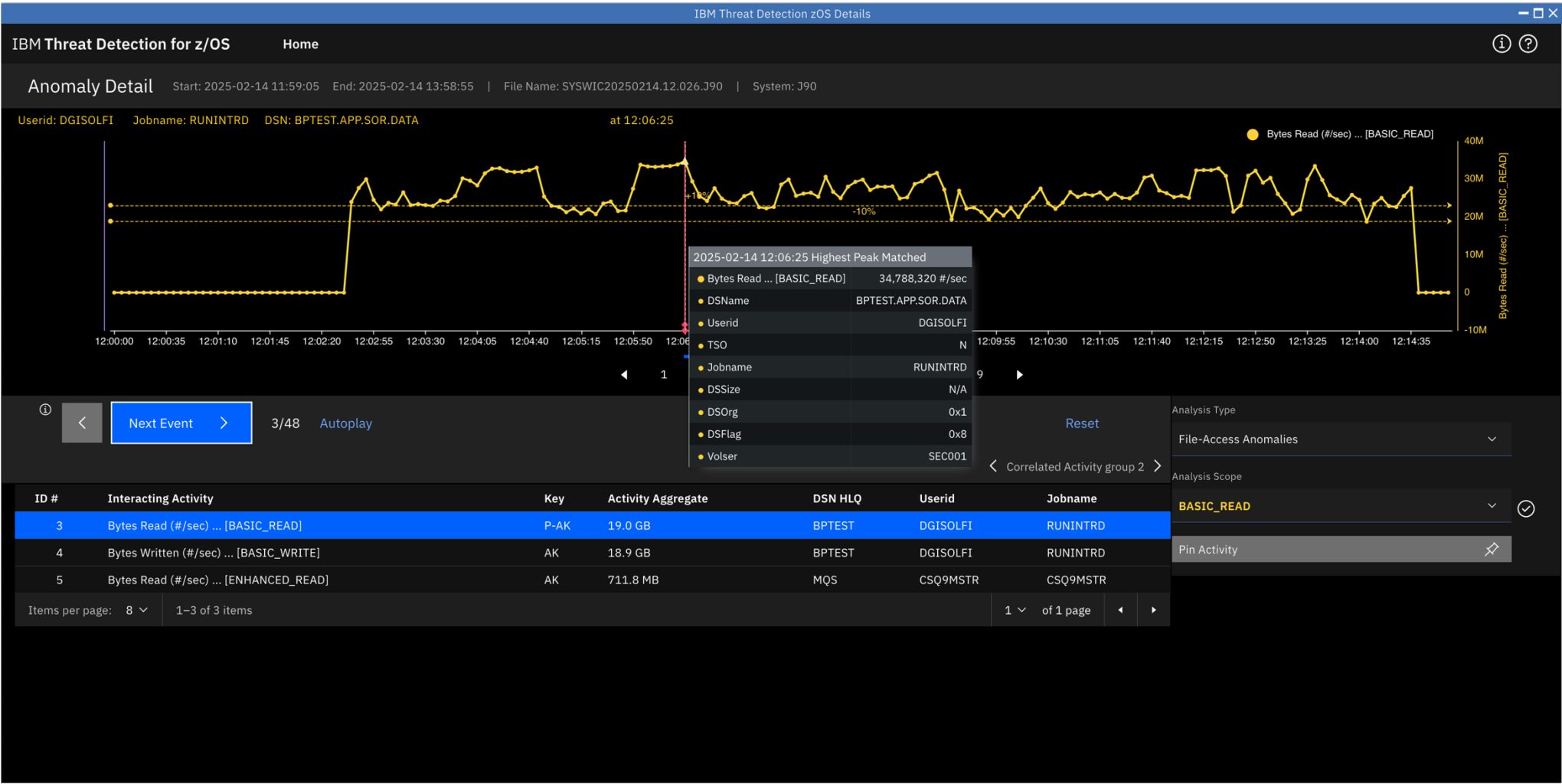
Column filter or sort actions ...
Reset

Alert: ✔
Userid: DGIS

ID #	Activity Name / Anomaly Signature	Events	Alert	Row	Userid	Jobname	Activity Aggregate	Data Set Name	System	Date Time
===== Worsening =====										
===== New Reoccurring =====										
NR1	Bytes Written ... [BASIC_WRITE]	2			DGISOIFI	RUNINTRD				
			Alert			RUNINTRD				
===== New Single Event =====										
SR1	Bytes Read ... [BASIC_READ] /DGISOIFI BPTEST[...]	1	Alert	*	DGISOIFI	RUNINTRD	19.0 GB	BPTEST.APP.SOR.DATA	J90	20250214.120000

TDz Detail View

- Similar event occurred 20 minutes earlier already
- Hover over red marker for more information
- Investigate user and job
- Probably take immediate action



TDz Dashboard – Exclusions

- Reducing false positives with exclusions

IBM Threat Detection z/OS Dashboard

HomeExclusions

Anomaly Dashboard

Start: 2025-01-31 12:20:05End: 2025-02-14 23:30:00 | File Name: SYSWIC20250126.WEEKLY.JA0 ... | Systems: J90, JA0, JD0, JF0

OverviewList view

Alert: Userid: DGIS

Analytics boundary: 20250214.08

Enable / Remove: Column filter or sort actions ...

Reset

<New Single Event><Next>

1 / 2

ID #	Activity Name / Anomaly Signature	Events	Alert	Row	Userid	Jobname	Activity Aggregate	Data Set Name	System	Date Time
							===== Worsening =====			
							===== New Reoccurring =====			
NR1	Bytes Written ... [BASIC_WRITE]	2			DGISO	RUNINTRD			J90	20250214.120000
			Alert		DGISO	RUNINTRD			J90	20250214.120000
							===== New Single Event =====			
SR1	Bytes Read ... [BASIC_READ] /DGISO BPTEST[...]	1	Alert	*	DGISO	RUNINTRD	19.0 GB	BPTEST.APP.SOR.DATA	J90	20250214.120000

TDz Dashboard – Exclusions

- Opens exclusions tab
- Suggestion list organized in 2 groups
 - userid.jobname
 - HLQ + userid.jobname
- Signatures Column shows the total number of unique signatures matched with the entry
- Scroll down to a high number of signatures

IBM Threat Detection z/OS Dashboard							
IBM Threat Detection for z/OS		Home	Exclusions				
Exclusions		You can help to improve the quality of the IBM TDz analytics with the exclusion list. Consider adding the following suggested exclusions to your list by using the check box on each row. Or you can edit the list directly by clicking Edit Exclusion List.					Edit exclusion list
	Exclusion Value	Signatures	Activity Type	Jobname	UserID	Data Set Name	Activity Aggregate
	===== userID.jobname =====						
	===== HLQ + userID.jobname =====						
▼	<input type="checkbox"/> HLQ + userID.jobname: IMSVS.MPR8TN00.*.ENHANCED_WRITE	22	[ENHANCED_WRITE]	AS123400	MPR8TN00	IMSVS.IMSA.D2025031.T1232142.V7ATRC	2.27 GB
			[ENHANCED_WRITE]	AS135941	MPR8TN00	IMSVS.IMS8.D2025031.T1358214.V3ETRC	3.07 GB
			[ENHANCED_WRITE]	AS151438	MPR8TN00	IMSVS.IMS8.D2025034.T1512538.V92TRC	3.23 GB
▼	<input type="checkbox"/> HLQ + userID.jobname: CANDLE.OMEGADM.*.ENHANCED_READ	23	[ENHANCED_READ]	JA56TMS	OMEGADM	CANDLE.PLEX1.JA56RT.HPD20002.D	259.94 MB
			[ENHANCED_READ]	JA56TMS	OMEGADM	CANDLE.PLEX1.JA56RT.HPD20001.D	199.01 MB
			[ENHANCED_READ]	JA56TMS	OMEGADM	CANDLE.PLEX1.JA56RT.HPD20003.D	536.89 MB
^	<input type="checkbox"/> HLQ + userID.jobname: CSQARC1.CSQ9MSTR.*.ENHANCED_WRITE	6	[ENHANCED_WRITE]	CSQ9MSTR	CSQ9MSTR	CSQARC1.CSQ9.E25032.T0723581.A0154710	370.83 MB
			[ENHANCED_WRITE]	CSQ9MSTR	CSQ9MSTR	CSQARC1.CSQ9.E25032.T0801092.A0154717	392.83 MB
			[ENHANCED_WRITE]	CSQ9MSTR	CSQ9MSTR	CSQARC1.CSQ9.E25032.T0805337.A0154718	542.59 MB
			[ENHANCED_WRITE]	CSQ9MSTR	CSQ9MSTR	CSQARC1.CSQ9.E25032.T0904248.A0154729	574.40 MB
			[ENHANCED_WRITE]	CSQ9MSTR	CSQ9MSTR	CSQARC1.CSQ9.E25032.T1805192.A0154829	614.60 MB
			[ENHANCED_WRITE]	CSQ9MSTR	CSQ9MSTR	CSQARC1.CSQ9.E25037.T0101031.A0155723	887.19 MB
▼	<input type="checkbox"/> HLQ + userID.jobname: CSOARC2.CSQ9MSTR.*.ENHANCED_WRITE	6	[ENHANCED_WRITE]	CSQ9MSTR	CSQ9MSTR	CSQARC2.CSQ9.E25032.T0723581.A0154710	370.83 MB

TDz Dashboard – Exclusions

- 2 different approaches
- Select an entry
- Press „add to exclusion list“ button in the blue line
- Confirm your selection
- Exclusion policy file is updated automatically

IBM Threat Detection z/OS Dashboard							
IBM Threat Detection for z/OS		Home	Exclusions				
Exclusions		You can help to improve the quality of the IBM TDz analytics with the exclusion list. Consider adding the following suggested exclusions to your list by using the check box on each row. Or you can edit the list directly by clicking Edit Exclusion List.					Edit exclusion list
1 item selected		Add to exclusion list					
	Exclusion Value	Signatures	Activity Type	Jobname	UserID	Data Set Name	Activity Aggregate
▼	<input type="checkbox"/> HLQ + userID.jobname: DBS8.MPR8TN00.*.ENHANCED_READ	6	[ENHANCED_READ]	AS123501	MPR8TN00	DBS8.IMS8.OLP20	2.32 GB
			[ENHANCED_READ]	AS124008	MPR8TN00	DBS8.IMS8.OLP23	2.60 GB
			[ENHANCED_READ]	AS135941	MPR8TN00	DBS8.IMS8.OLP29	3.64 GB
▼	<input type="checkbox"/> HLQ + userID.jobname: CQSOFF.IXGLOGR.*.ENHANCED_WRITE	884	[ENHANCED_WRITE]	IXGLOGR	IXGLOGR	CQSOFF.CQS.FF.LOGSTRM.A0059244.DATA	500.06 MB
			[ENHANCED_WRITE]	IXGLOGR	IXGLOGR	CQSOFF.CQS.FF.LOGSTRM.A0059243.DATA	499.22 MB
			[ENHANCED_WRITE]	IXGLOGR	IXGLOGR	CQSOFF.CQS.FF.LOGSTRM.A0059246.DATA	497.59 MB
▼	<input checked="" type="checkbox"/> HLQ + userID.jobname: IXGLOGR.IXGLOGR.*.ENHANCED_WRITE	6035	[ENHANCED_WRITE]	IXGLOGR	IXGLOGR	IXGLOGR.IFASMF.SMF101T.JA0.A0003672.DATA	211.34 MB
			[ENHANCED_WRITE]	IXGLOGR	IXGLOGR	IXGLOGR.JA0.DRL.LOGSTRM.A0216681.DATA	210.71 MB
			[ENHANCED_WRITE]	IXGLOGR	IXGLOGR	IXGLOGR.IFASMF.SMF110T.JA0.A0013072.DATA	650.94 MB
▼	<input type="checkbox"/> HLQ + userID.jobname: DBS9.MPR8TN00.*.BASIC_READ	4	[BASIC_READ]	AS124426	MPR8TN00	DBS9.IMS9.OLP6	1.24 GB
			[BASIC_READ]	AS130601	MPR8TN00	DBS9.IMS9.OLP3	2.42 GB
			[BASIC_READ]	AS134046	MPR8TN00	DBS9.IMS9.OLP5	2.61 GB
▼	<input type="checkbox"/> HLQ + userID.jobname: IMSVS.MPR8TN00.*.BASIC_WRITE	7	[BASIC_WRITE]	AS124426	MPR8TN00	IMSVS.IMS9.D2025031.T1241510.VFDTRCS	1019.24 MB
			[BASIC_WRITE]	AS125100	MPR8TN00	IMSVS.IMSB.D2025031.T1248023.V18TRCS	1.98 GB
			[BASIC_WRITE]	AS081437	MPR8TN00	IMSVS.IMSB.D2025041.T0812300.VEBTRCS	3.17 GB

TDz Dashboard – Exclusions

- Manually change the exclusion list
- Press the Edit exclusion list button

IBM Threat Detection for z/OS

HomeExclusions

Exclusions

You can help to improve the quality of the IBM TDz analytics with the exclusion list. Consider adding the following suggested exclusions to your list by using the check box on each row. Or you can edit the list directly by clicking Edit Exclusion List.

Edit exclusion list

1 item selected

Add to exclusion list | Cancel

	Exclusion Value	Signatures	Activity Type	Jobname	UserID	Data Set Name	Activity Aggregate
▼	<input type="checkbox"/> HLQ + userID.jobname: DBS8.MPR8TN00.*.ENHANCED_READ	6	[ENHANCED_READ]	AS123501	MPR8TN00	DBS8.IMS8.OLP20	2.32 GB
			[ENHANCED_READ]	AS124008	MPR8TN00	DBS8.IMS8.OLP23	2.60 GB
			[ENHANCED_READ]	AS135941	MPR8TN00	DBS8.IMS8.OLP29	3.64 GB
▼	<input type="checkbox"/> HLQ + userID.jobname: CQSOFF.IXGLOGR.*.ENHANCED_WRITE	884	[ENHANCED_WRITE]	IXGLOGR	IXGLOGR	CQSOFF.CQS.FF.LOGSTRM.A0059244.DATA	500.06 MB
			[ENHANCED_WRITE]	IXGLOGR	IXGLOGR	CQSOFF.CQS.FF.LOGSTRM.A0059243.DATA	499.22 MB
			[ENHANCED_WRITE]	IXGLOGR	IXGLOGR	CQSOFF.CQS.FF.LOGSTRM.A0059246.DATA	497.59 MB
▼	<input checked="" type="checkbox"/> HLQ + userID.jobname: IXGLOGR.IXGLOGR.*.ENHANCED_WRITE	6035	[ENHANCED_WRITE]	IXGLOGR	IXGLOGR	IXGLOGR.IFASMF.SMF101T.JA0.A0003672.DATA	211.34 MB
			[ENHANCED_WRITE]	IXGLOGR	IXGLOGR	IXGLOGR.JA0.DRL.LOGSTRM.A0216681.DATA	210.71 MB
			[ENHANCED_WRITE]	IXGLOGR	IXGLOGR	IXGLOGR.IFASMF.SMF110T.JA0.A0013072.DATA	650.94 MB
▼	<input type="checkbox"/> HLQ + userID.jobname: DBS9.MPR8TN00.*.BASIC_READ	4	[BASIC_READ]	AS124426	MPR8TN00	DBS9.IMS9.OLP6	1.24 GB
			[BASIC_READ]	AS130601	MPR8TN00	DBS9.IMS9.OLP3	2.42 GB
			[BASIC_READ]	AS134046	MPR8TN00	DBS9.IMS9.OLP5	2.61 GB
▼	<input type="checkbox"/> HLQ + userID.jobname: IMSVS.MPR8TN00.*.BASIC_WRITE	7	[BASIC_WRITE]	AS124426	MPR8TN00	IMSVS.IMS9.D2025031.T1241510.VFDTRCS	1019.24 MB
			[BASIC_WRITE]	AS125100	MPR8TN00	IMSVS.IMSB.D2025031.T1248023.V18TRCS	1.98 GB
			[BASIC_WRITE]	AS081437	MPR8TN00	IMSVS.IMSB.D2025041.T0812300.VEBTRCS	3.17 GB

TDz Dashboard – Exclusions

- Manually add your entry to the exclusion list

IBM Threat Detection for z/OS

HomeExclusions

Exclusions

You can help to improve the quality of the data by using the check box on each row to add or remove exclusions.

<input type="checkbox"/>	Exclusion Value
<input type="checkbox"/>	HLQ + userID.jobname: DBS8.MPR8TN00.*.ENHANCED_READ
<input type="checkbox"/>	HLQ + userID.jobname: CQS0FF.IXGLOGR.*.ENHANCED_WRITE
<input type="checkbox"/>	HLQ + userID.jobname: IXGLOGR.IXGLOGR.*.ENHANCED_WRITE
<input type="checkbox"/>	HLQ + userID.jobname: DBS9.MPR8TN00.*.BASIC_READ
<input type="checkbox"/>	HLQ + userID.jobname: IMSVS.MPR8TN00.*.BASIC_WRITE

Exclusion List ⓘ

```
{  "hlq": [],  "useridAndJobname": [],  "hlqUserIdAndJobname": [    "RLSADSW.CICSPS.*.ENHANCED_WRITE",    "RLSADSW.CICSPS.*.ENHANCED_READ",    "IXGLOGR.IXGLOGR.*.ENHANCED_WRITE"  ]}
```

Cancel

Save

Edit exclusion list ↗

Data Set Name	Activity Aggregate
DBS8.IMS8.OLP20	2.32 GB
DBS8.IMS8.OLP23	2.60 GB
DBS8.IMS8.OLP29	3.64 GB
CQS.FF.LOGSTRM.A0059244.DATA	500.06 MB
CQS.FF.LOGSTRM.A0059243.DATA	499.22 MB
CQS.FF.LOGSTRM.A0059246.DATA	497.59 MB
FASMF.SMF101T.JA0.A0003672.DATA	211.34 MB
JA0.DRL.LOGSTRM.A0216681.DATA	210.71 MB
FASMF.SMF110T.JA0.A0013072.DATA	650.94 MB
DBS9.IMS9.OLP6	1.24 GB
DBS9.IMS9.OLP3	2.42 GB
DBS9.IMS9.OLP5	2.61 GB
IMS9.D2025031.T1241510.VFDTRCS	1019.24 MB
IMS9.D2025031.T1248023.V18TRCS	1.98 GB
IMS9.D2025041.T0812300.VEBTRCS	3.17 GB